

**Table 5.1 Degrees Conferred by Division and Campus  
Spring 2008\*\***

<b>Division</b>	<b>Associates</b>	<b>Bachelors</b>	<b>Masters</b>	<b>All Degrees</b>
<b>UVI</b>				
Business	23	88	3	<b>114</b>
Education	10	20	41	<b>71</b>
Humanities and Social Sciences	5	41	2	<b>48</b>
Nursing	11	8	*	<b>19</b>
Science and Mathematics	20	35	7	<b>62</b>
<b>All</b>	<b>69</b>	<b>192</b>	<b>53</b>	<b>314</b>
<b>ST. THOMAS</b>				
Business	15	57	0	72
Education	8	9	24	41
Humanities and Social Sciences	3	26	1	30
Nursing	1	8	*	9
Science and Mathematics	2	29	1	32
<b>All</b>	<b>29</b>	<b>129</b>	<b>26</b>	<b>184</b>
<b>ST. CROIX</b>				
Business	8	31	3	42
Education	2	11	17	30
Humanities and Social Sciences	2	15	1	18
Nursing	10	0	*	10
Science and Mathematics	18	6	6	30
<b>All</b>	<b>40</b>	<b>63</b>	<b>27</b>	<b>130</b>

\*Degree not offered, \*\* includes December graduates

**Table 5.2 Degrees Conferred on St Thomas Campus by Division and Major  
Spring 2008**

<b>Division</b>	<b>Associates</b>	<b>Bachelors</b>	<b>Masters</b>	<b>All Degrees</b>
<b>BUSINESS</b>				
Accounting	1	19	*	<b>20</b>
Business Administration	*	38	0	<b>38</b>
Business Management	14	*	*	<b>14</b>
Computer Information Systems	0	*	*	<b>0</b>
Hotel/Restaurant Management	0	*	*	<b>0</b>
<b>Total</b>	<b>15</b>	<b>57</b>	<b>0</b>	<b>72</b>
<b>EDUCATION</b>				
Inclusive Early Childhood Education	8	0	*	<b>8</b>
Elementary Education	*	9	*	<b>9</b>
Education	*	*	24	<b>24</b>
<b>Total</b>	<b>8</b>	<b>9</b>	<b>24</b>	<b>41</b>
<b>HUMANITIES AND SOCIAL SCIENCES</b>				
Communication	*	7	*	<b>7</b>
English	*	6	*	<b>6</b>
Humanities	*	1	*	<b>1</b>
Speech, Communication and Theater	*	0	*	<b>0</b>
Music Education	*	2	*	<b>2</b>
Police Science and Administration	3	*	*	<b>3</b>
Psychology	*	5	*	<b>5</b>
Social Sciences	*	5	*	<b>5</b>
Social Work	*	0	*	<b>0</b>
Public Administration	*	*	1	<b>1</b>
<b>Total</b>	<b>3</b>	<b>26</b>	<b>1</b>	<b>30</b>
<b>NURSING</b>				
	1	8	*	9
<b>Total</b>	<b>1</b>	<b>8</b>	<b>*</b>	<b>9</b>
<b>SCIENCE AND MATHEMATICS</b>				
Applied Mathematics	*	4	*	<b>4</b>
Biology	*	7	*	<b>7</b>
Chemistry	*	5	*	<b>5</b>
Computer Science	2	4	*	<b>6</b>
Marine Biology	*	5	*	<b>5</b>
Mathematics	*	4	1	<b>5</b>
Physics	*	*	*	<b>0</b>
<b>Total</b>	<b>2</b>	<b>29</b>	<b>1</b>	<b>32</b>
<b>ALL</b>	<b>29</b>	<b>129</b>	<b>26</b>	<b>184</b>

**Table 5.3 Degrees Conferred on St Croix Campus by Division and Major  
Spring 2008**

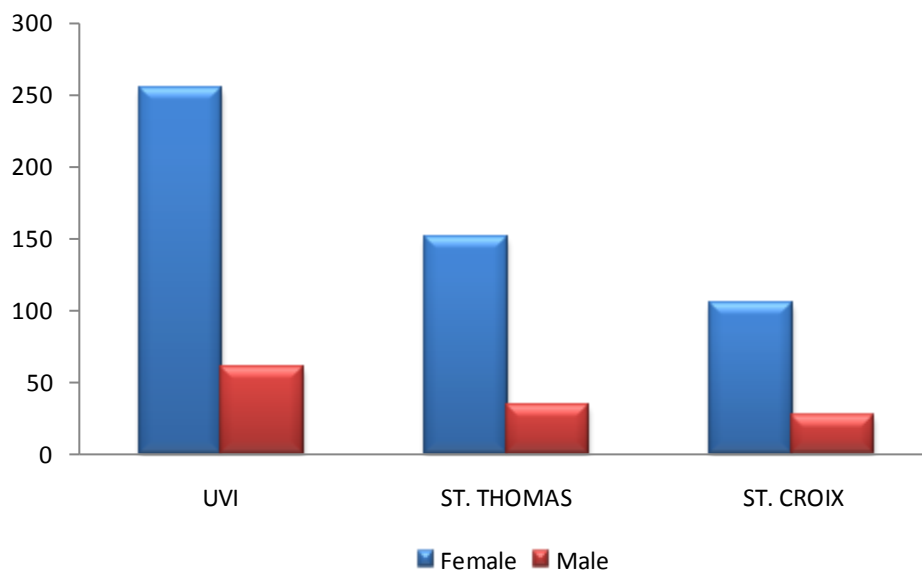
Division	Associates	Bachelors	Masters	All Degrees
<b>BUSINESS</b>				
Accounting	1	5	*	6
Business Administration	*	26	3	29
Business Management	6	*	*	6
Computer Information System	1	*	*	1
<b>Total</b>	<b>8</b>	<b>31</b>	<b>3</b>	<b>42</b>
<b>EDUCATION</b>				
Inclusive Early Childhood Education	2	0	*	2
Elementary Education	*	11	*	11
Education	*	*	17	17
<b>Total</b>	<b>2</b>	<b>11</b>	<b>17</b>	<b>30</b>
<b>HUMANITIES AND SOCIAL SCIENCES</b>				
Communication	*	2	*	2
English	*	4	*	4
Police Science and Administration	2	*	*	2
Psychology	*	7	*	7
Public Administration	*	*	1	1
Sociology	*	2	*	2
<b>Total</b>	<b>2</b>	<b>15</b>	<b>1</b>	<b>18</b>
<b>NURSING</b>	10	0	*	10
<b>Total</b>	<b>10</b>	<b>0</b>	<b>*</b>	<b>10</b>
<b>SCIENCE AND MATHEMATICS</b>				
Applied Mathematics	*	1	*	1
Biology	*	2	*	2
Computer Science	2	1	*	3
Mathematics	*	1	6	7
Marine Biology	*	1	*	1
Physics	3	*	*	3
Processed Technology	13	*	*	13
<b>Total</b>	<b>18</b>	<b>6</b>	<b>6</b>	<b>30</b>
<b>ALL</b>	<b>40</b>	<b>63</b>	<b>27</b>	<b>130</b>

\*Degree not offered

**Table 5.4 Degrees Conferred by Campus and Gender  
Spring 2008**

Gender	Associates	Bachelors	Masters	All Degrees
<b>UVI</b>				
Female	55	156	43	254
Male	14	36	10	60
<b>Total</b>	<b>69</b>	<b>192</b>	<b>53</b>	<b>314</b>
<b>ST. THOMAS</b>				
Female	27	101	22	150
Male	2	28	4	34
<b>Total</b>	<b>29</b>	<b>129</b>	<b>26</b>	<b>184</b>
<b>ST. CROIX</b>				
Female	28	55	21	104
Male	12	8	6	26
<b>Total</b>	<b>40</b>	<b>63</b>	<b>27</b>	<b>130</b>

**Figure 5.4 Degrees Conferred  
by Campus and Gender  
Spring 2008**

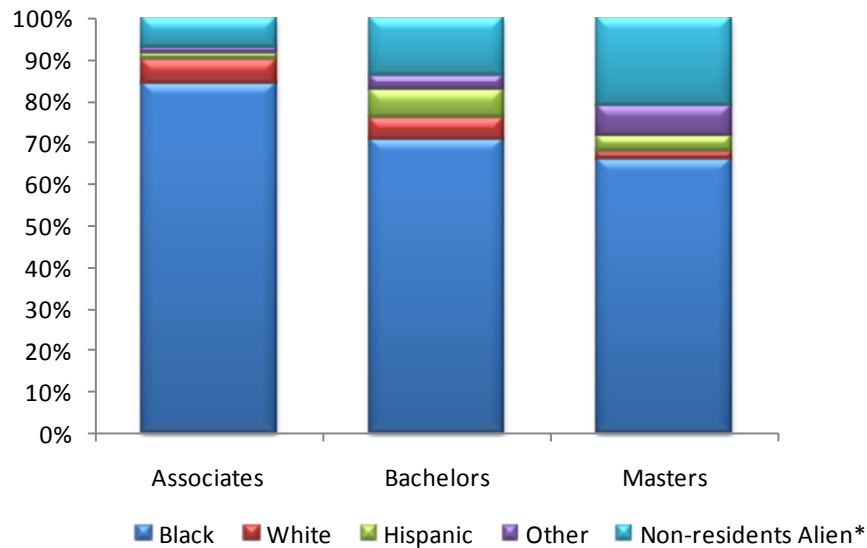


**Table 5.5 Degrees Conferred by Campus and Ethnic Origin  
Spring 2008**

<b>Degree</b>	<b>Non-residents Alien*</b>	<b>Black</b>	<b>White</b>	<b>Hispanic</b>	<b>Other</b>
<b>UVI (ALL)</b>					
Associates	5	58	4	1	1
Bachelors	26	136	10	13	7
Masters	11	35	1	2	4
<b>Total</b>	<b>42</b>	<b>229</b>	<b>15</b>	<b>16</b>	<b>12</b>
<b>ST. THOMAS</b>					
Associates	5	24	0	0	0
Bachelors	23	87	10	4	5
Masters	11	11	0	1	3
<b>Total</b>	<b>39</b>	<b>122</b>	<b>10</b>	<b>5</b>	<b>8</b>
<b>ST. CROIX</b>					
Associates	0	34	4	1	1
Bachelors	3	49	0	9	2
Masters	0	24	1	1	1
<b>Total</b>	<b>3</b>	<b>107</b>	<b>5</b>	<b>11</b>	<b>4</b>

\*Non-resident Alien can be of any ethnic origin

**Figure 5.5 UVI Degrees Conferred by Ethnic Origin  
Spring 2008**



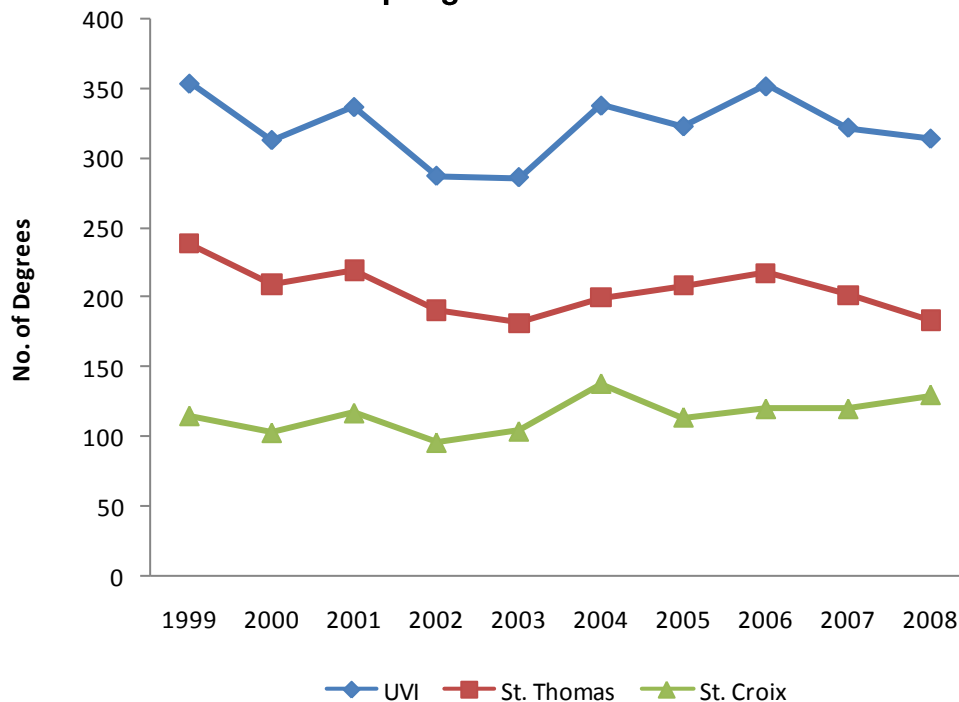
**Table 5.6 Degrees Conferred by Campus, Gender, and Ethnic Origin  
Spring 2008**

Gender	Non-residents Aliens	Black	White	Hispanic	Other
<b>UVI (ALL)</b>					
Female	33	188	13	12	8
Male	9	41	2	4	4
<b>All</b>	<b>42</b>	<b>229</b>	<b>15</b>	<b>16</b>	<b>12</b>
<b>ST. THOMAS</b>					
Female	31	103	8	4	4
Male	8	19	2	1	4
<b>All</b>	<b>39</b>	<b>122</b>	<b>10</b>	<b>5</b>	<b>8</b>
<b>ST. CROIX</b>					
Female	2	85	5	8	4
Male	1	22	0	3	0
<b>All</b>	<b>3</b>	<b>107</b>	<b>5</b>	<b>11</b>	<b>4</b>

**Table 5.7 Degrees Conferred by Campus  
Spring 1999-2008**

<b>Degree</b>	<b>1999</b>	<b>2000</b>	<b>2001</b>	<b>2002</b>	<b>2003</b>	<b>2004</b>	<b>2005</b>	<b>2006</b>	<b>2007</b>	<b>2008</b>
<b>UVI (ALL)</b>										
Associates	71	70	65	47	64	73	91	76	81	69
Bachelors	242	214	220	211	169	193	174	211	193	192
Masters	41	29	52	29	53	72	58	65	48	53
<b>Total</b>	<b>354</b>	<b>313</b>	<b>337</b>	<b>287</b>	<b>286</b>	<b>338</b>	<b>323</b>	<b>352</b>	<b>322</b>	<b>314</b>
<b>ST. THOMAS</b>										
Associates	45	40	39	21	30	29	39	33	38	29
Bachelors	170	154	155	155	117	129	125	146	131	129
Masters	24	16	26	15	35	42	45	39	33	26
<b>Total</b>	<b>239</b>	<b>210</b>	<b>220</b>	<b>191</b>	<b>182</b>	<b>200</b>	<b>209</b>	<b>218</b>	<b>202</b>	<b>184</b>
<b>ST. CROIX</b>										
Associates	26	30	26	26	34	44	52	43	43	40
Bachelors	72	60	65	56	52	64	49	65	62	63
Masters	17	13	26	14	18	30	13	26	15	27
<b>Total</b>	<b>115</b>	<b>103</b>	<b>117</b>	<b>96</b>	<b>104</b>	<b>138</b>	<b>114</b>	<b>120</b>	<b>120</b>	<b>130</b>

**Figure 5.7 Degrees Conferred by Campus  
Spring 1999 - 2008**

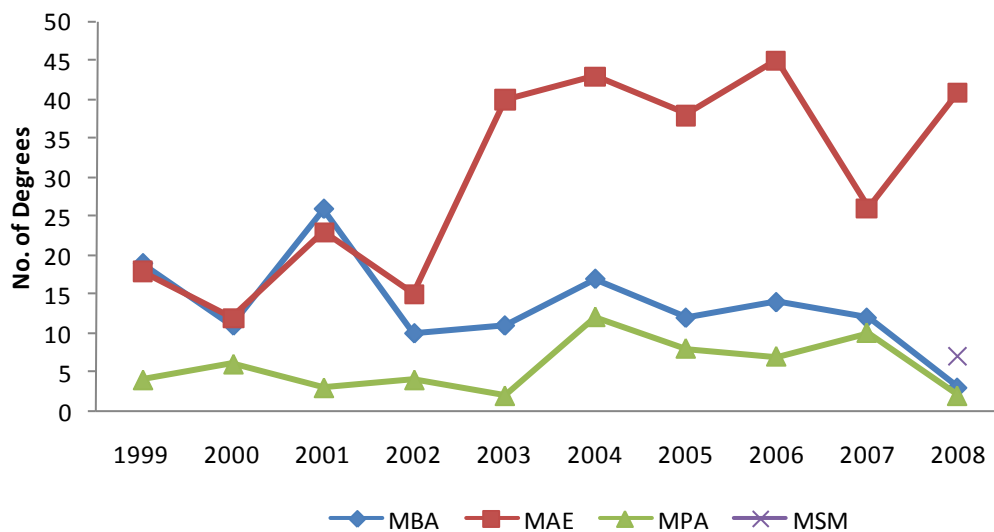


**Table 5.8 Masters Degrees Conferred by Program  
Spring 1999-2008**

Division	1999	2000	2001	2002	2003	2004	2005	2006	2007	2008
Business Administration	19	11	26	10	11	17	12	14	12	3
Education	18	12	23	15	40	43	38	45	26	41
Mathematics for Secondary Teachers*	*	*	*	*	*	*	*	*	*	2
Public Administration	4	6	3	4	2	12	8	7	10	7
<b>Total</b>	<b>41</b>	<b>29</b>	<b>52</b>	<b>29</b>	<b>53</b>	<b>72</b>	<b>58</b>	<b>66</b>	<b>48</b>	<b>53</b>

\* Program started in summer 2006

**Figure 5.8 Masters Degrees Conferred by Program  
Spring 1999 - 2008**





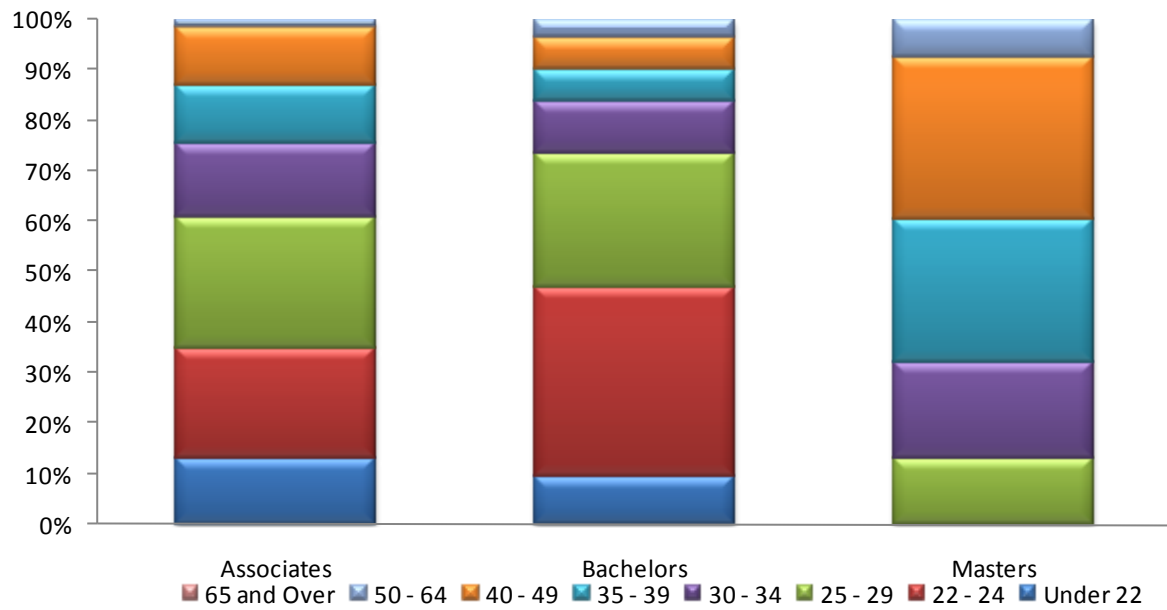
**Table 5.9 Degrees Conferred by Place of Residence  
Spring 2008**

<b>Place of Residence</b>	<b>Associates</b>	<b>Bachelors</b>	<b>Masters</b>	<b>Total</b>
St. Thomas	23	84	15	122
St. Croix	40	73	26	139
St. John	2	6	0	8
<b>All Residents</b>	<b>65</b>	<b>163</b>	<b>41</b>	<b>269</b>
Caribbean	3	19	11	33
Foreign	0	0	0	0
US-Mainland	1	10	1	12
<b>All Non-Residents</b>	<b>4</b>	<b>29</b>	<b>12</b>	<b>45</b>
<b>All Areas</b>	<b>69</b>	<b>192</b>	<b>53</b>	<b>314</b>

**Table 5.10 Degrees Conferred by Campus, Degree and Age Group  
Spring 2008**

<b>Age Group</b>	<b>Associates</b>	<b>Bachelors</b>	<b>Graduates</b>	<b>Total</b>
<b>UVI (ALL)</b>				
Under 22	9	18	0	27
22 – 24	15	72	0	87
25 – 29	18	51	7	76
30 – 34	10	20	10	40
35 – 39	8	12	15	35
40 – 49	8	12	17	37
50 – 64	1	7	4	12
65 and Over	0	0	0	0
<b>All age groups</b>	<b>69</b>	<b>192</b>	<b>53</b>	<b>314</b>
<b>St. Thomas</b>				
Under 22	2	15	0	17
22 – 24	4	51	0	55
25 – 29	6	37	4	47
30 – 34	5	10	6	21
35 – 39	4	6	7	17
40 – 49	7	8	7	22
50 – 64	1	2	2	5
65 and Over	0	0	0	0
<b>All age groups</b>	<b>29</b>	<b>129</b>	<b>26</b>	<b>184</b>
<b>St. Croix</b>				
Under 22	7	3	0	10
22 – 24	11	21	0	32
25 – 29	12	14	3	29
30 – 34	5	10	4	19
35 – 39	4	6	8	18
40 – 49	1	4	10	15
50 – 64	0	5	2	7
65 and Over	0	0	0	0
<b>All age groups</b>	<b>40</b>	<b>63</b>	<b>27</b>	<b>130</b>

Figure 5.6 UVI Graduates by Degree and Age Group  
Spring 2008



**Table 5.11 Graduates by Campus, Degree and Mean GPA  
Spring 2008**

<b>Degree</b>	<b>UVI Mean GPA</b>	<b>Count</b>	<b>St. Thomas Mean GPA</b>	<b>Count</b>	<b>St. Croix Mean GPA</b>	<b>Count</b>
Associates	2.89	81	2.82	38	2.99	43
Bachelors	3.00	193	3.00	131	2.99	62
Masters	3.60	48	3.54	33	3.71	15
<b>All Degrees</b>	<b>3.06</b>	<b>322</b>	<b>3.05</b>	<b>202</b>	<b>3.06</b>	<b>120</b>

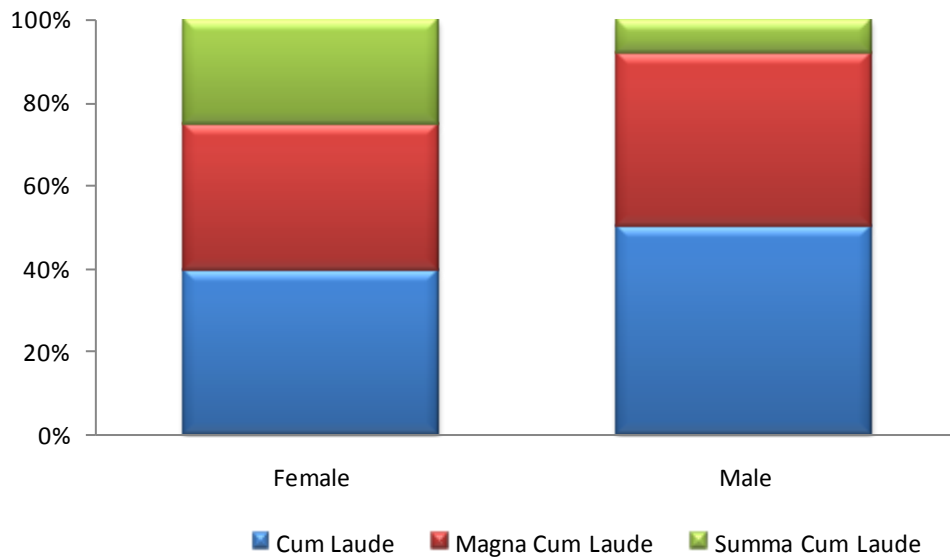
**Table 5.12 Graduates by Campus, Gender and Mean GPA  
Spring 2008**

<b>Gender</b>	<b>UVI Mean GPA</b>	<b>Count</b>	<b>St. Thomas Mean GPA</b>	<b>Count</b>	<b>St. Croix Mean GPA</b>	<b>Count</b>
<b>UVI (ALL)</b>						
Female	3.18	254	3.22	150	3.11	104
Male	3.02	60	2.92	34	3.14	26
<b>All Genders</b>	<b>3.15</b>	<b>314</b>	<b>3.16</b>	<b>184</b>	<b>3.12</b>	<b>130</b>
<b>Undergraduate</b>						
Female	3.07	212	3.12	129	2.99	83
Male	2.90	50	2.82	30	3.01	20
<b>All Genders</b>	<b>3.04</b>	<b>262</b>	<b>3.07</b>	<b>159</b>	<b>2.99</b>	<b>103</b>
<b>Graduate</b>						
Female	3.70	42	3.81	21	3.59	21
Male	3.62	10	3.68	4	3.58	6
<b>All Genders</b>	<b>3.69</b>	<b>52</b>	<b>3.79</b>	<b>25</b>	<b>3.59</b>	<b>27</b>

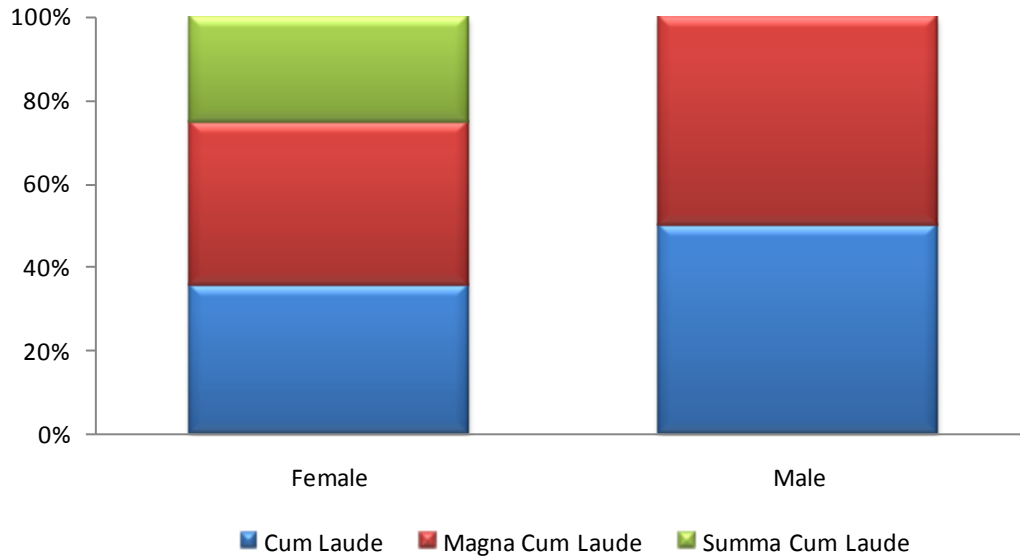
**Table 5.13 Undergraduates by Campus, Gender and Honors  
Spring 2008**

Type of Honor	Female	Male	All Genders
<b>UVI (ALL)</b>			
Cum Laude	31	6	37
Magna Cum Laude	28	5	33
Summa Cum Laude	20	1	21
<b>Total</b>	<b>79</b>	<b>12</b>	<b>91</b>
<b>St. Thomas</b>			
Cum Laude	18	2	20
Magna Cum Laude	20	2	22
Summa Cum Laude	13	0	13
<b>Total</b>	<b>51</b>	<b>4</b>	<b>55</b>
<b>St. Croix</b>			
Cum Laude	13	4	17
Magna Cum Laude	8	3	11
Summa Cum Laude	7	1	8
<b>Total</b>	<b>28</b>	<b>8</b>	<b>36</b>

**Figure 5.13a UVI Undergraduates Graduating with Honors by  
Gender and Type of Honor  
Spring 2008**



**Figure 5.13b St. Thomas Campus Undergraduates Graduating with Honors by Gender and Type of Honor Spring 2008**



**Figure 5.13c St. Croix Campus Undergraduates Graduating with Honors by Gender and Type of Honor Spring 2008**

